



MIST AP SUSPENDED CEILING TILE ENCLOSURE MOUNT (BT 11 STYLE)



The AccelTex Solutions Mist AP suspended ceiling tile enclosure mount secures and protects a Mist BT 11 within a ceiling tile grid. This enclosure mount fits in a standard 2'x2' suspended ceiling tile grid opening and is the most convenient and secure method for AP mounting in a suspended ceiling environment.

Part Number: ATS-CT-MIST2-2X2



FEATURES

- Door is easily removed and can be installed to open in any direction with our innovative spring hinge system
- AP installs using the included ceiling tile grid clip shipped with the AP onto an integrated mounting plate with no tools
- Key lock for security
- Includes integrated tabs for securing enclosure mount to permanent building structure
- Shallow back box (1.5") allows installation into the tightest ceiling clearances



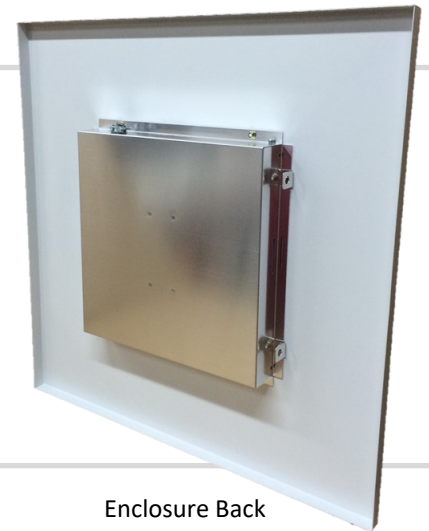
BENEFITS

- Easy to Install
- No ceiling tile grid modification necessary (if mounting into a 2'x2' grid)
- Service the AP without removing the enclosure mount from ceiling
- Lightweight aluminum design reduces ceiling strain and load
- Simple, one person installation
- Blends seamlessly into ceiling
- No tools required for installation



MOUNT SHIPS WITH

- 2x2 Suspended Ceiling Tile Enclosure Mount with installed Mist 2 Door
- Cord Grip
- Key



Enclosure Back



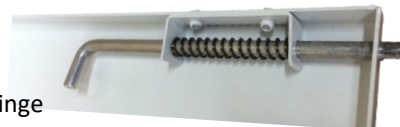
Integrated mounting tabs on two sides

Key Lock



Integrated Mounting Plate, Cord Grip and Repositionable Door

Spring Hinge



MIST AP SUSPENDED CEILING TILE ENCLOSURE MOUNT (BT 11 STYLE)

Part Number: ATS-CT-MIST2-2X2



MECHANICAL SPECIFICATIONS

Dimensions: 23.75" x 23.75" x 1.5" (603.25mm x 603.25mm x 38.1mm)
Weight (without AP): 3.75 lb (1.70 kg)
Material: Aluminum
Color: White
Lock: Key Lock
Installation: Suspended Ceiling (includes tabs for securing to building structure)
Equipment Installation: AP Mounting Feet onto Included Mounting Bracket



ENVIRONMENTAL SPECIFICATIONS

Installation Environment: Indoor

STANDARDS, TESTING AND CERTIFICATIONS

Designed to meet NEC300-22 and 300-23 to mount the Mist AP in plenum/air handling areas



WARRANTY

2 Year Limited Warranty